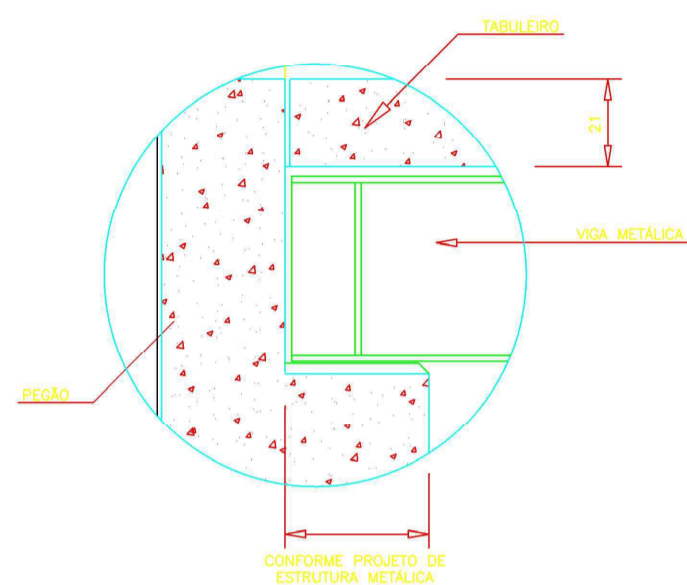


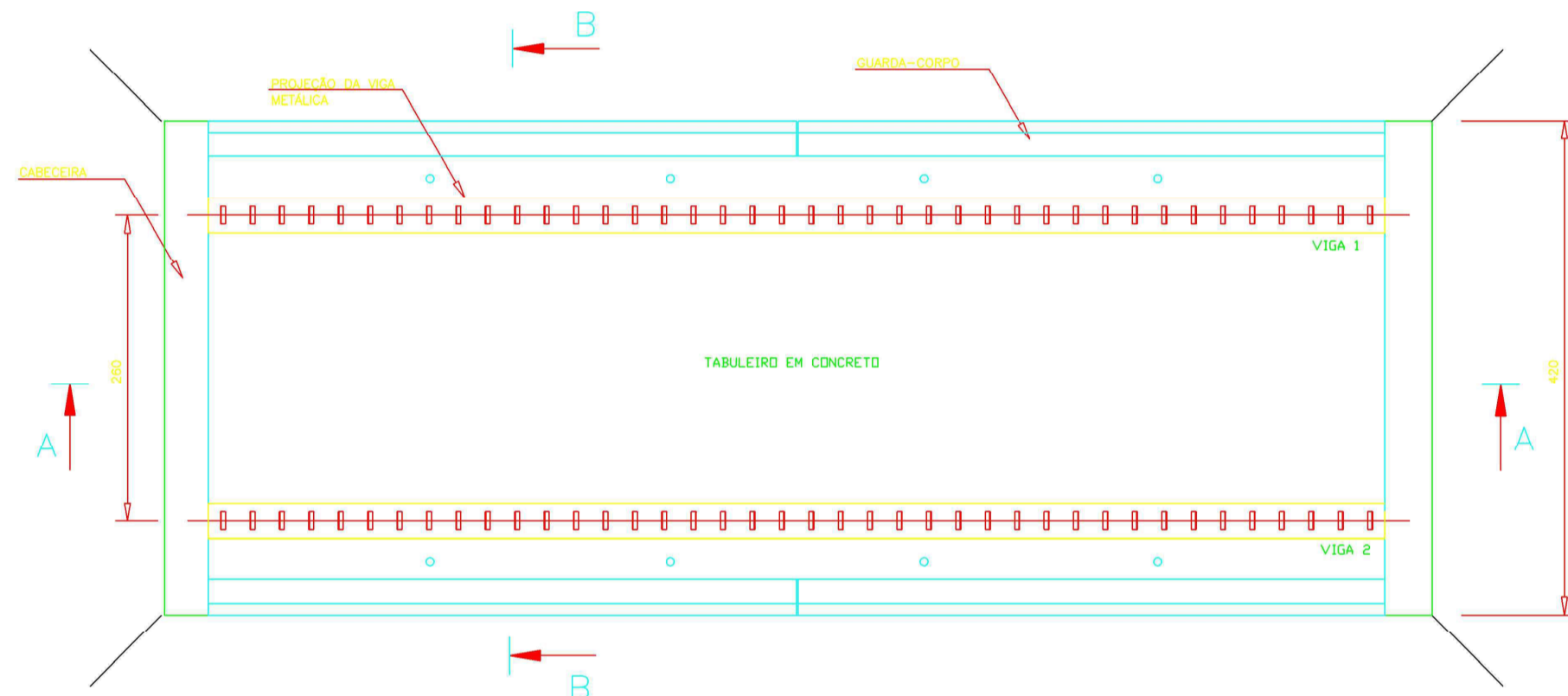
CORTE LONGITUDINAL AA

SEM ESCALA



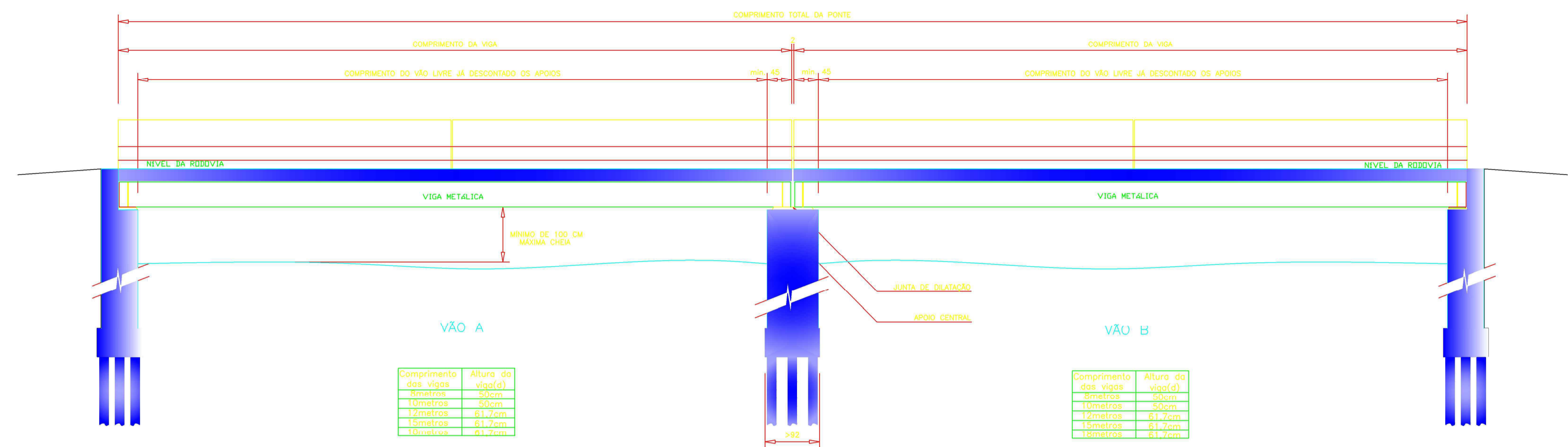
DETALHE APOIO DA VIGA

SEM ESCALA



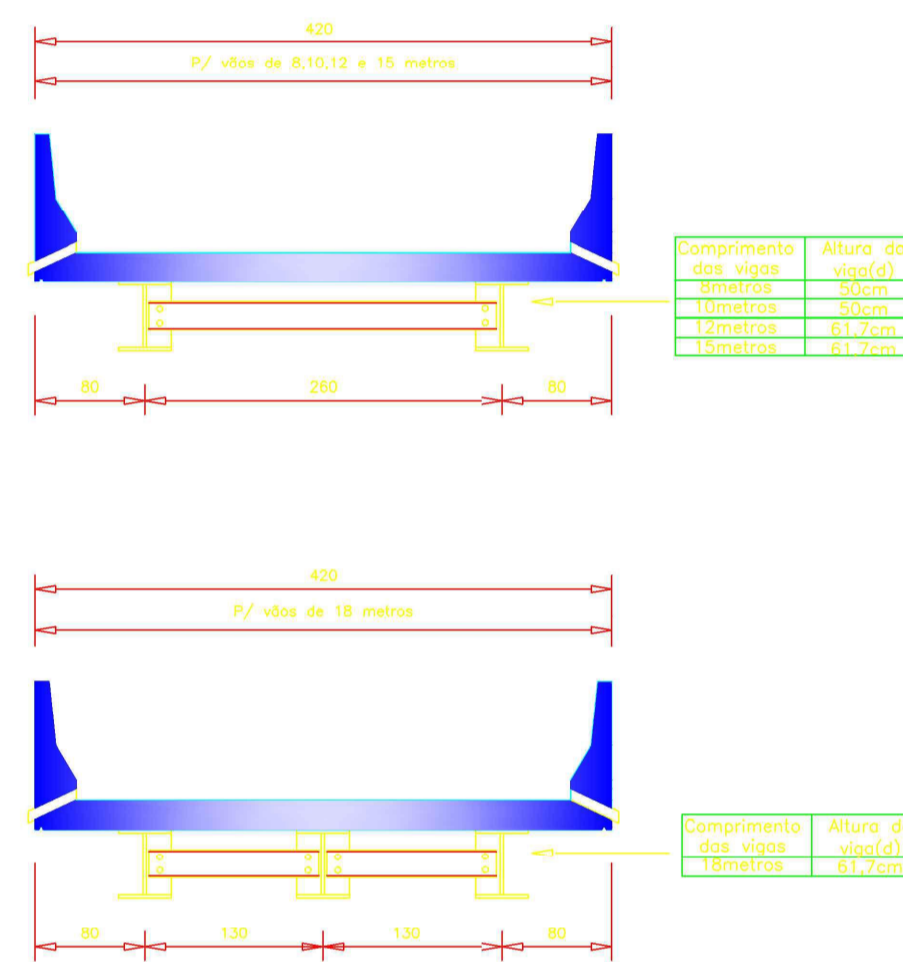
PLANTA BAIXA

SEM ESCALA



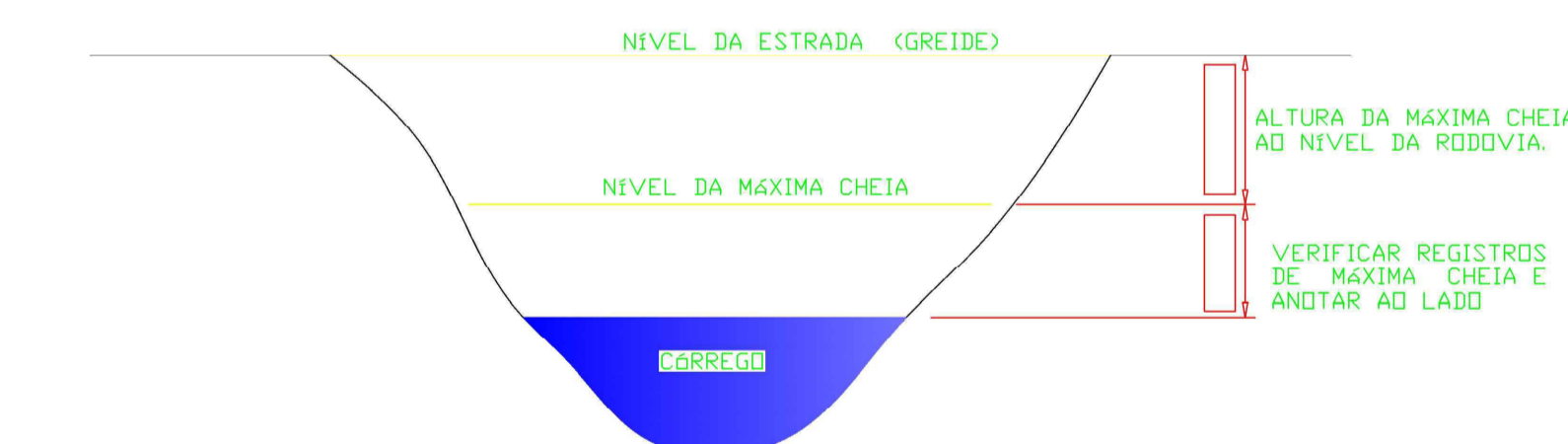
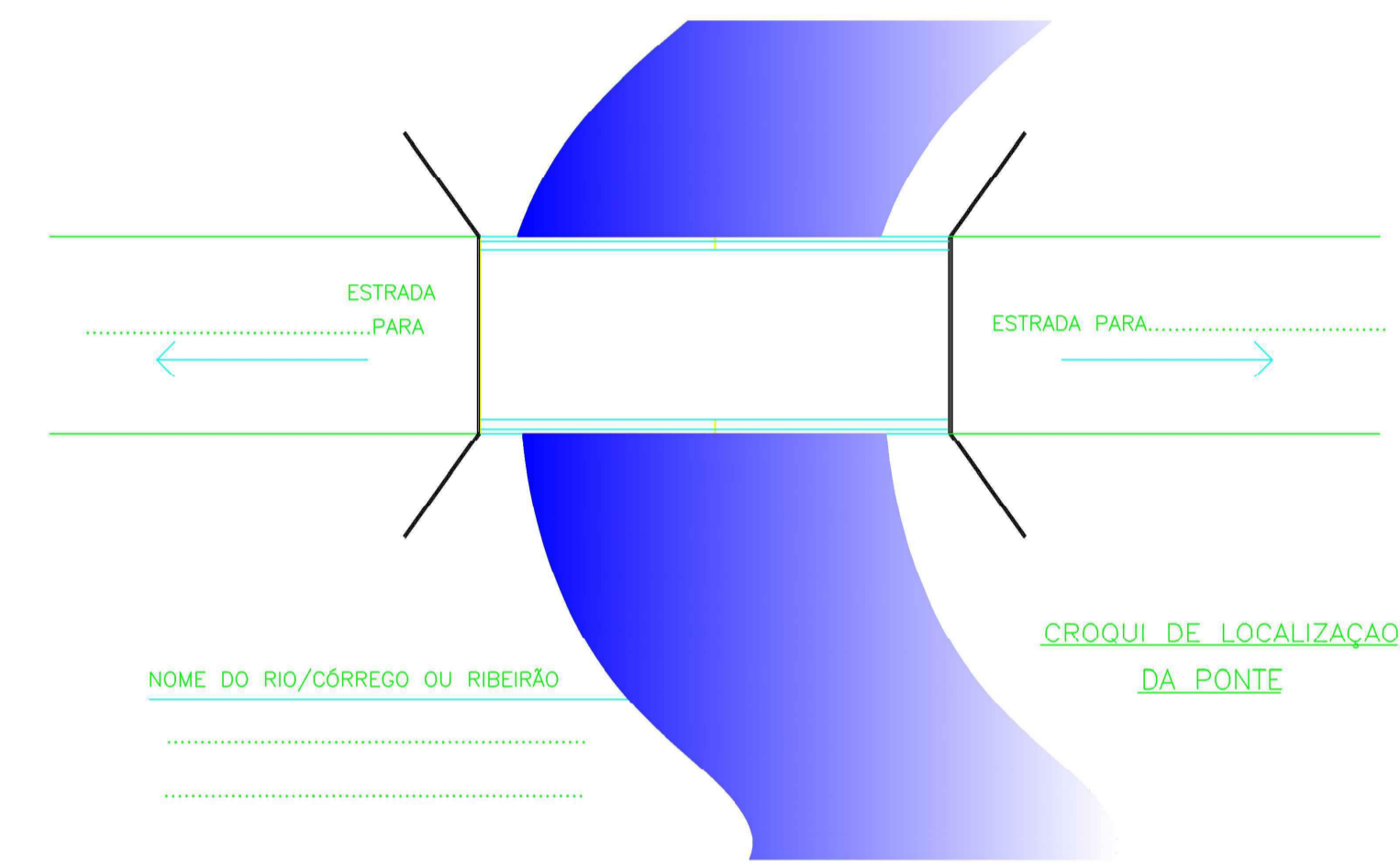
CORTE LONGITUDINAL AA - PARA VÃOS MISTOS

SEM ESCALA



CORTES TRANSVERSAIS BB

SEM ESCALA



BATIMETRIA

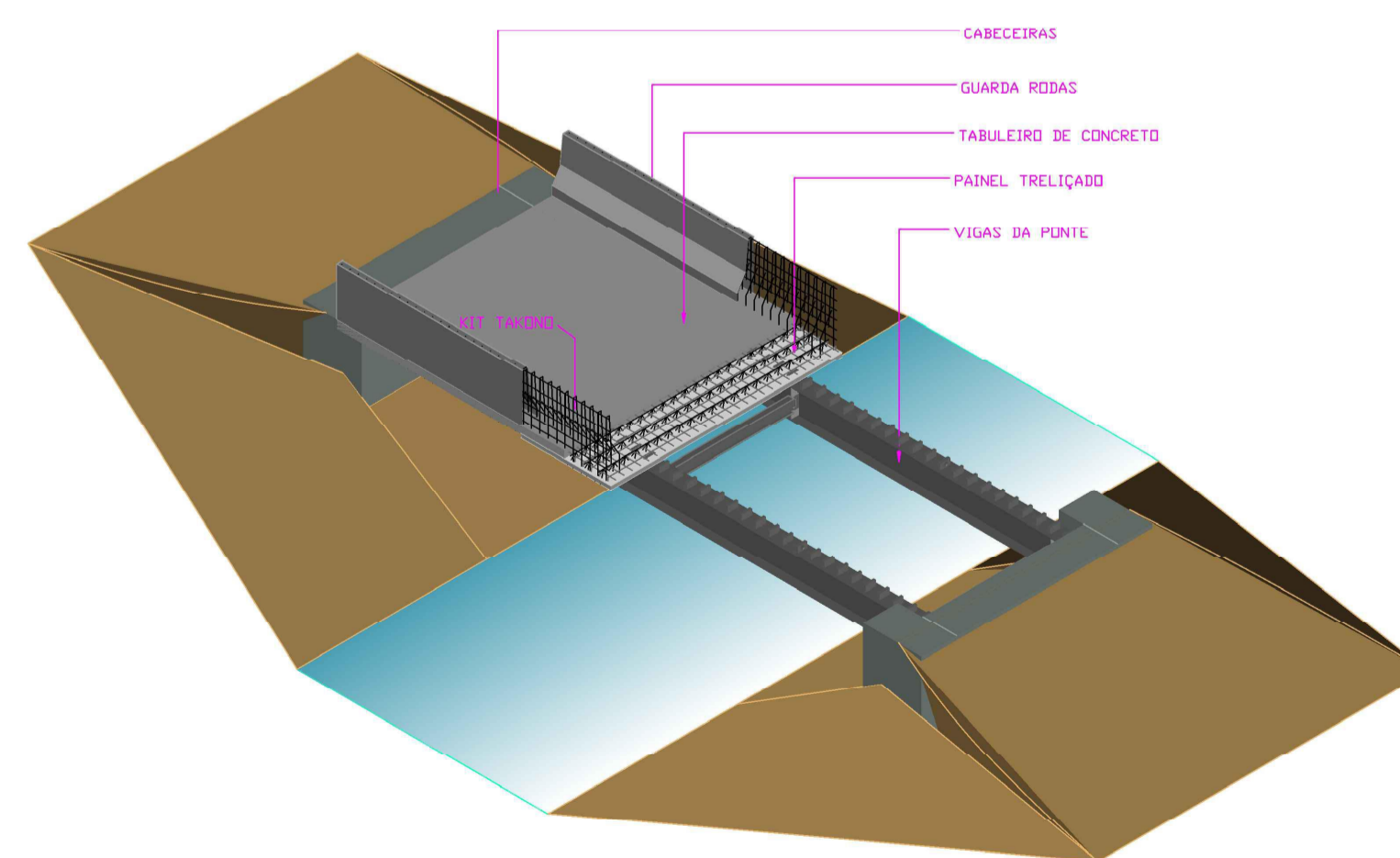


TABELA TÉCNICA DOS PERFIS USADOS NAS VIGAS DAS PONTES FORNECIDAS PELA FERRO E AÇO TAKONO

VE - Perfis eletro-soldados (USIMINAS)
W - Perfis laminados (AÇDOMINAS)

Reforço na base para vigas de 10-15e18metros

VÃO DA PONTE	VIGAS	Alma		Bases			Reforço nas bases		
		d	tw	bf(s)	bf(i)	tf	esp.	Larg.	Comp.
8 metros	2 VE 500x89	50cm	0,8cm	30cm	30cm	1,25cm			
10 metros	2 VE 500x89	50cm	0,8cm	30cm	30cm	1,25cm	1,25cm	25cm	650cm
12 metros	2 W610X140	61,7cm	1,31cm	23cm	23cm	2,25cm			
15 metros	2 W610X140	61,7cm	1,31cm	23cm	23cm	2,25cm	2,5cm	21cm	950cm
18 metros	3 W610X140	61,7cm	1,31cm	23cm	23cm	2,25cm	1,6cm	21cm	1150cm

NOTAS:

CONTÉUDO	AUTORIZAÇÃO	PROJETO		PROJ.	00000
		PROJETO	DATA		
PONTES SOB O RIO SÃO JOÃO		PROJETO ARQUITETÔNICO	2021	ARQUITETURA	
		PLANTA BAIXA, CORTES TRANSVERSAL E LONGITUDINAL, BATIMETRIA E TABELA DE PERFIS	01/01		