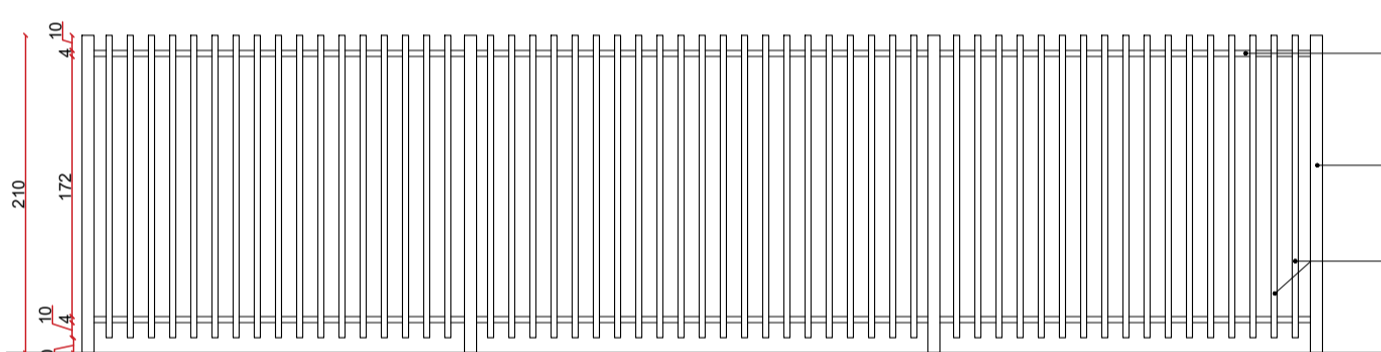
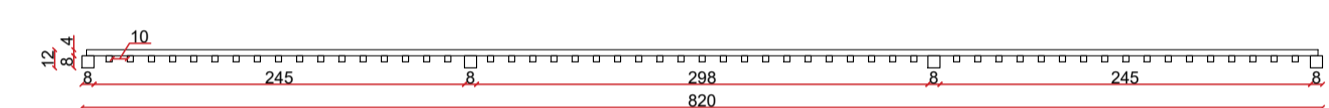
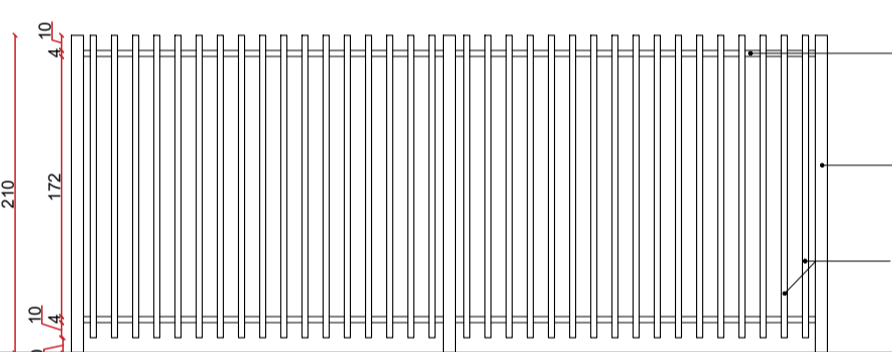
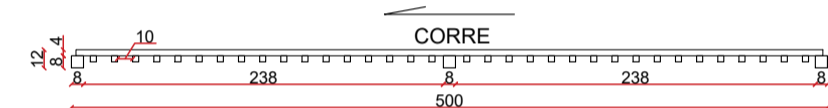


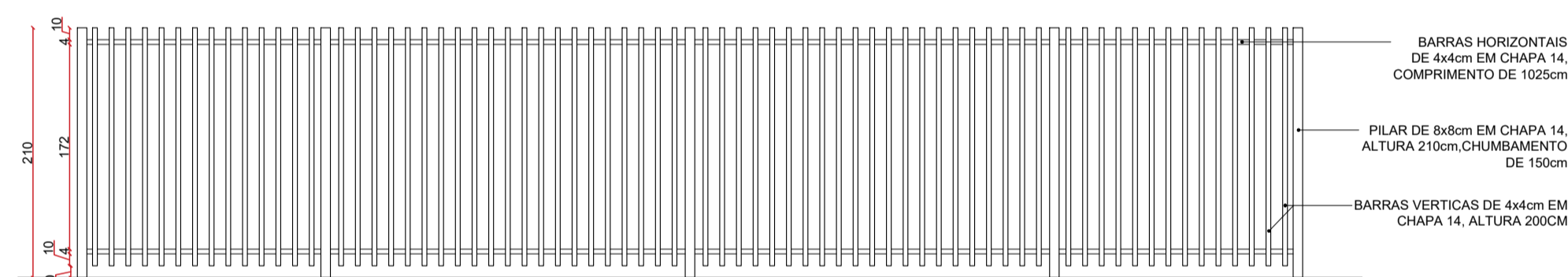
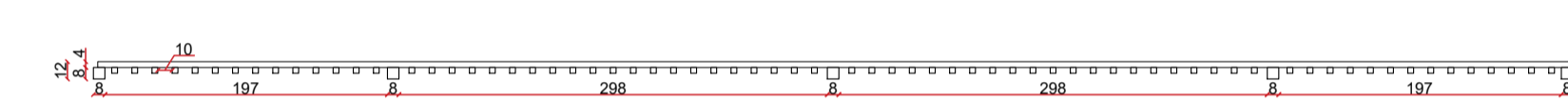
PLANTA - GRADIL
ESC. 1/50



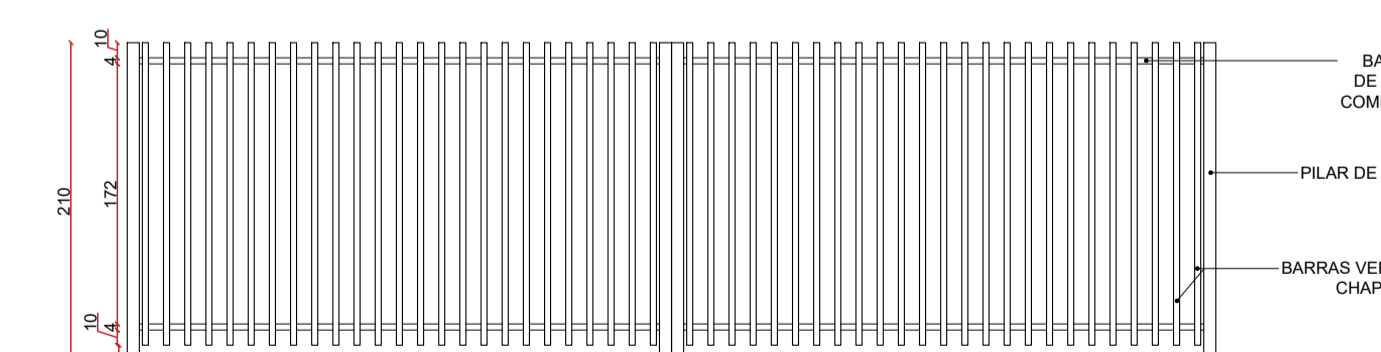
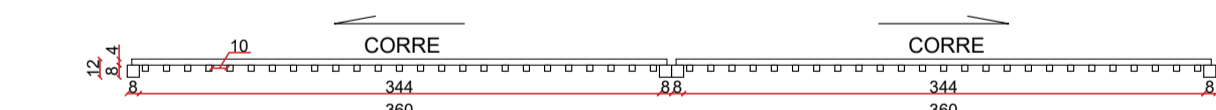
DETALHE TRECHO 01
ESC. 1/50



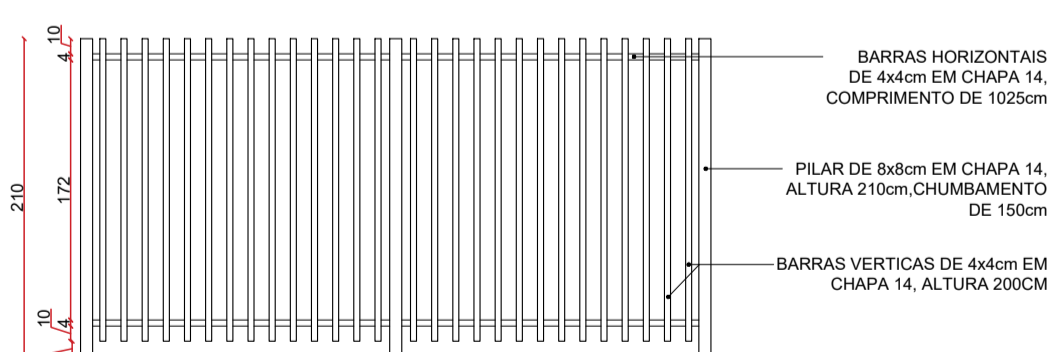
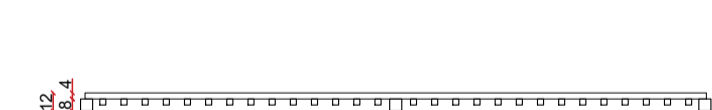
DETALHE TRECHO 02
ESC. 1/50



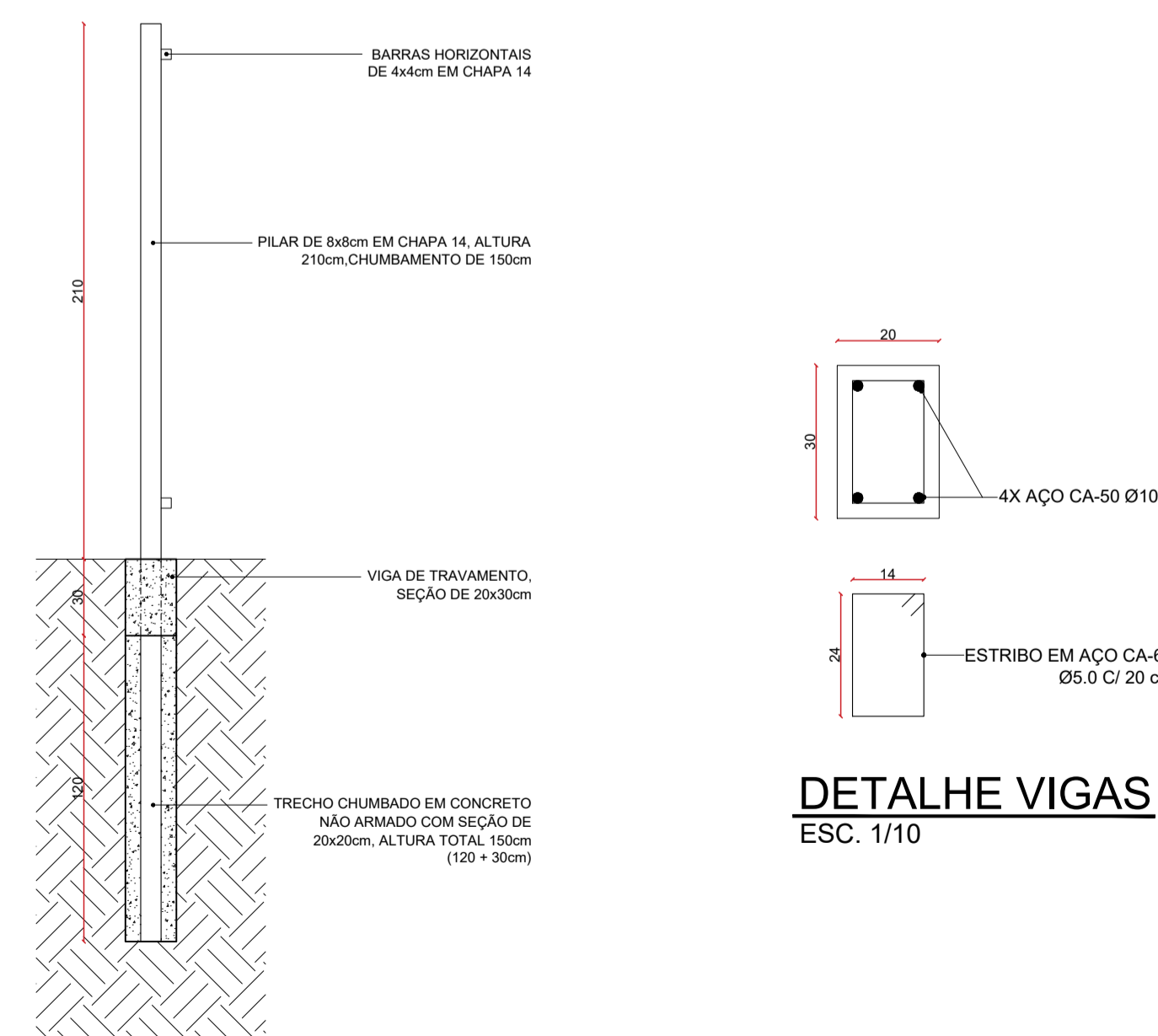
DETALHE TRECHO 03
ESC. 1/50



DETALHE TRECHO 04
ESC. 1/50



DETALHE TRECHO 05
ESC. 1/50



DETALHE PILARES
ESC. 1/25

DETALHE VIGAS
ESC. 1/10

EMPREENHIMENTO: UNIDADE BÁSICA DE SAÚDE - TIPO I
 PROPRIETÁRIO: PREFEITURA MUNICIPAL DE IGARATINGA - MG
 ENDEREÇO DA OBRA: RUA PRIMEIRO DE MARÇO, S/N, CENTRO, IGARATINGA - MG

PROPRIETÁRIO: **PREFEITURA MUNICIPAL DE IGARATINGA - MG**
 CNPJ - 18.313.825/0001-21

RESPONSÁVEL TÉCNICO: **FLÁVIO LUCAS GRECO SANTOS**
 ENGENHEIRO CIVIL
 CREA: 64.880 D

ÁREAS: TERRENO: 1.197,97 m ² CONSTRUÍDA: 511,62 m ²	ESCALA: INDICADA DATA: DEZEMBRO/2023	REVISÃO:
---	---	----------

CONTEÚDO: PLANTA TRECHO GRADIL; DETALHE TRECHO 01; DETALHE TRECHO 02; DETALHE TRECHO 03; DETALHE TRECHO 04; DETALHE TRECHO 05; DETALHE VIGA BALDRAME		PRANCHA: ÚNICA
---	--	--------------------------