

LOCAÇÃO
ESCALA - 1:50

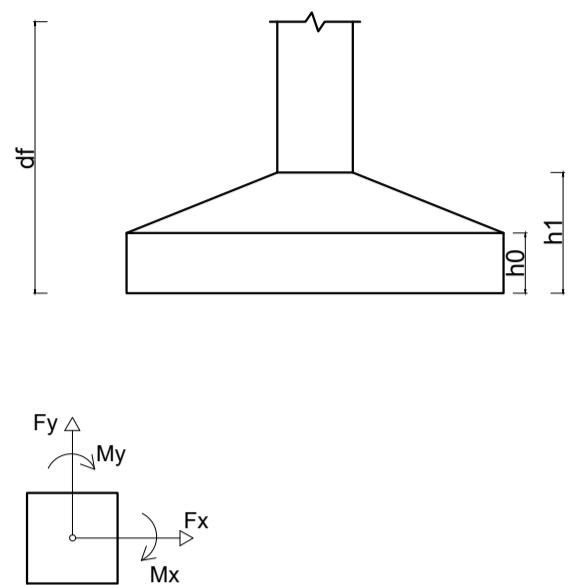
Relação do aço

2xS1 2xS10	S3 4xS11	2xS9
CA60	1 5.0 176 98 17248	
	2 5.0 176 24 4224	
	3 5.0 66 108 7128	
CA50	4 6.3 24 104 2496	
	5 6.3 16 129 2064	
	6 6.3 40 144 5760	
	7 6.3 20 124 2480	
	8 8.0 40 118 4720	
	9 8.0 40 133 5320	
	10 8.0 20 153 3060	
	11 10.0 20 127 2540	
	12 12.5 60 VAR VAR	

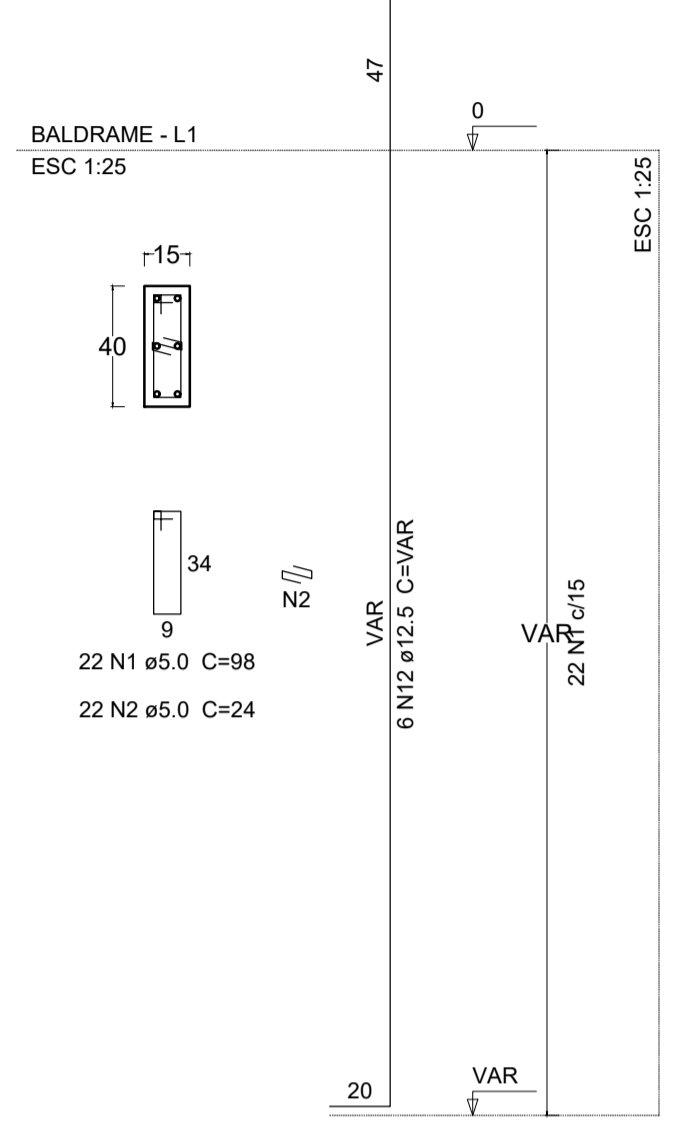
Resumo do aço

AÇO	DIAM	C.TOTAL (m)	PESO + 10% (kg)
CA50	6.3	128	34.5
	8.0	131	56.9
	10.0	25.4	17.2
	12.5	230.4	244.1
CA60	5.0	286	48.5
PESO TOTAL			
CA50		352.7	
CA60		48.5	

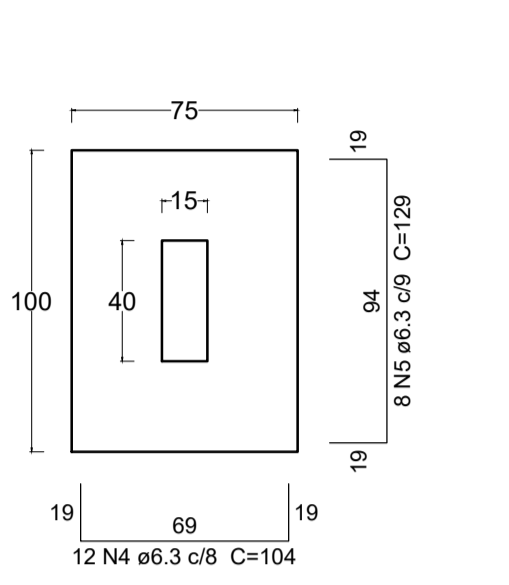
Vol. de concreto total (C-25) = 5.46 m³
Área de forma total = 50.28 m²



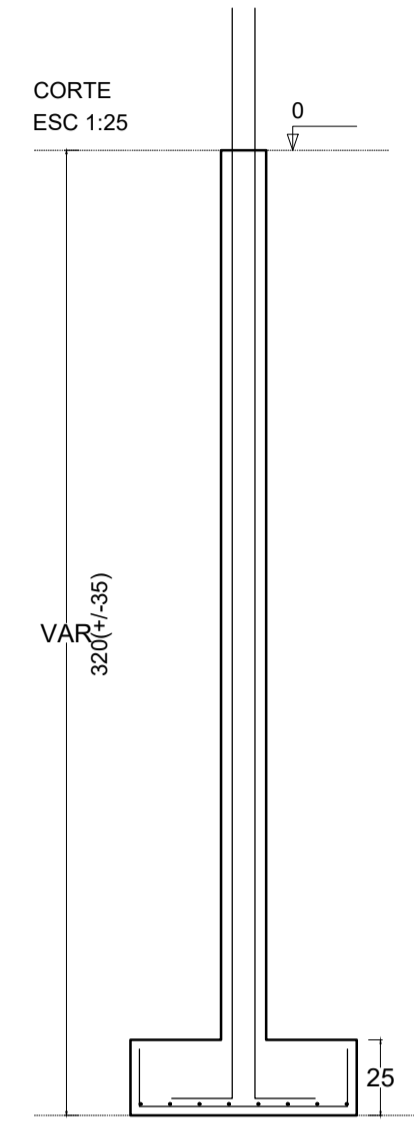
P1=P5



S1=S5
PLANTA
ESC 1:25

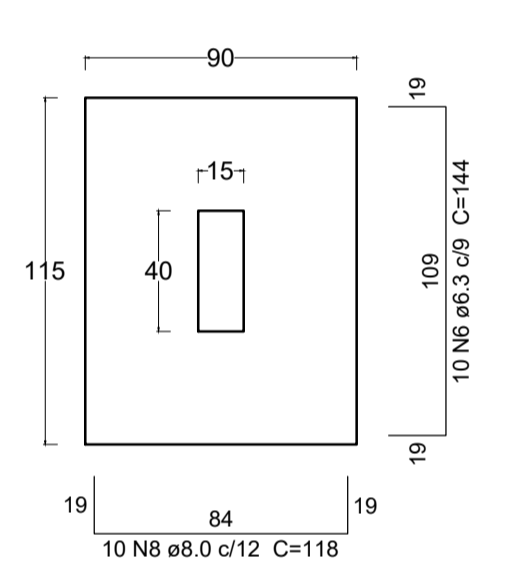
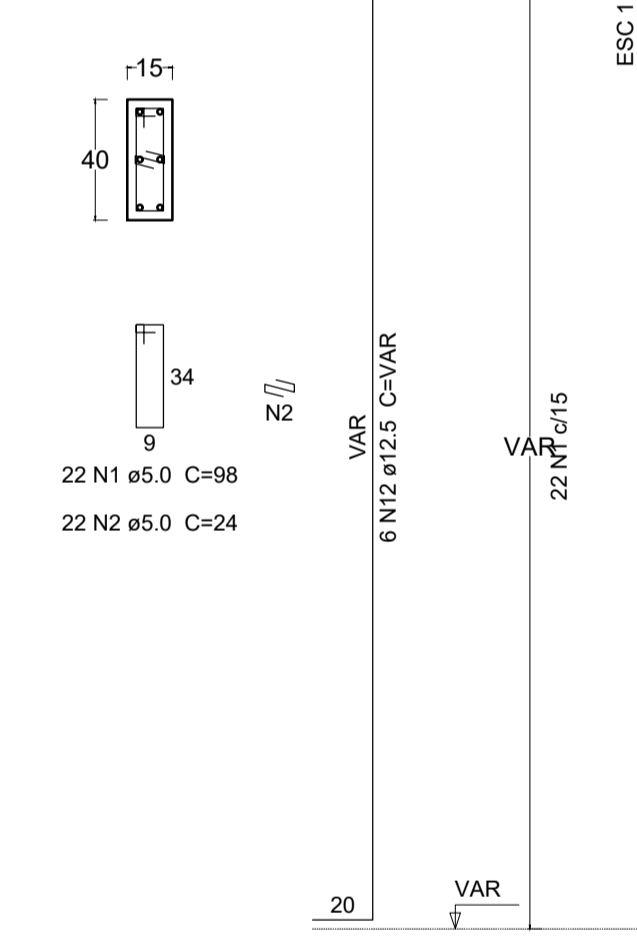


Solo com capacidade de suporte > 1.50 kgf/cm²
Solo compactado sobre a sapata
peso específico > 1600.00 kgf/m³

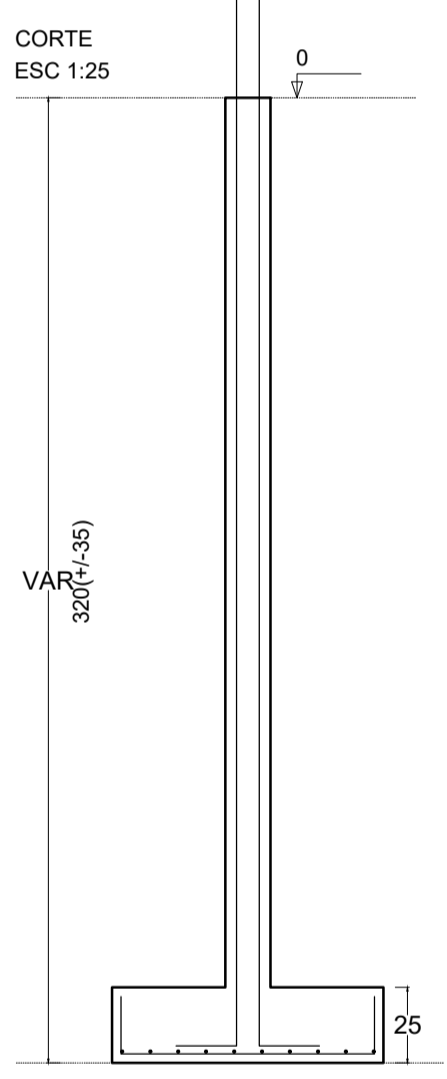


S2=S4=S7=S11
PLANTA
ESC 1:25

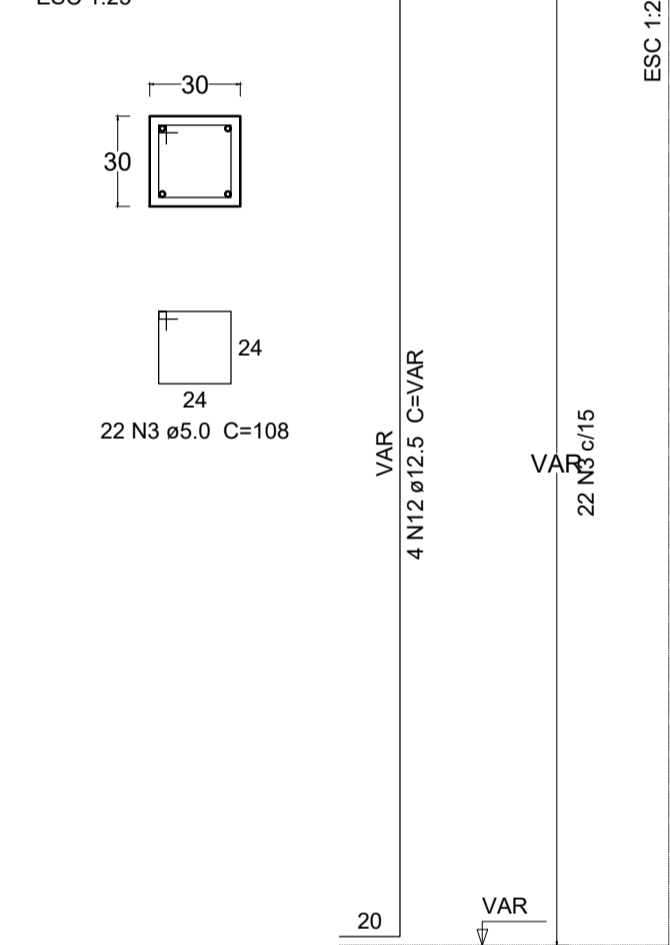
P2=P4=P7=P11
BALDRAME - L1
ESC 1:25



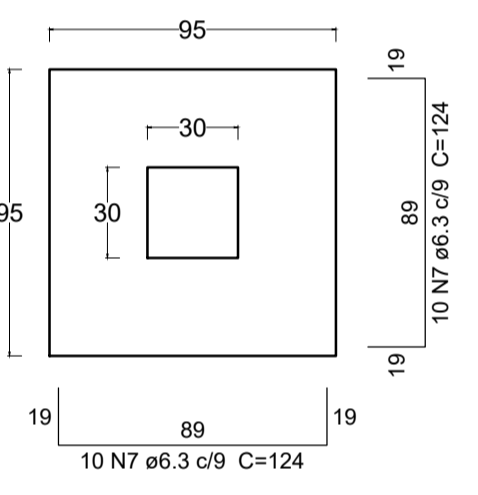
Solo com capacidade de suporte > 1.50 kgf/cm²
Solo compactado sobre a sapata
peso específico > 1600.00 kgf/m³



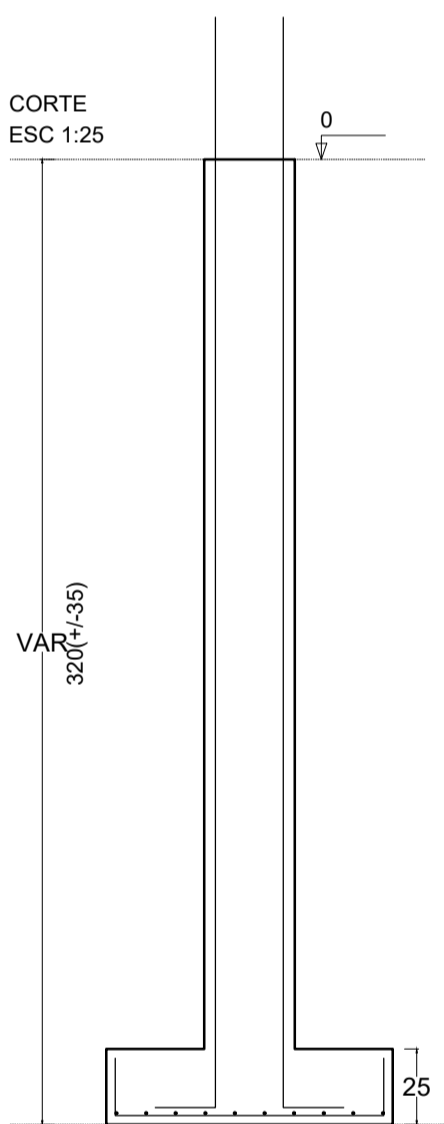
P3



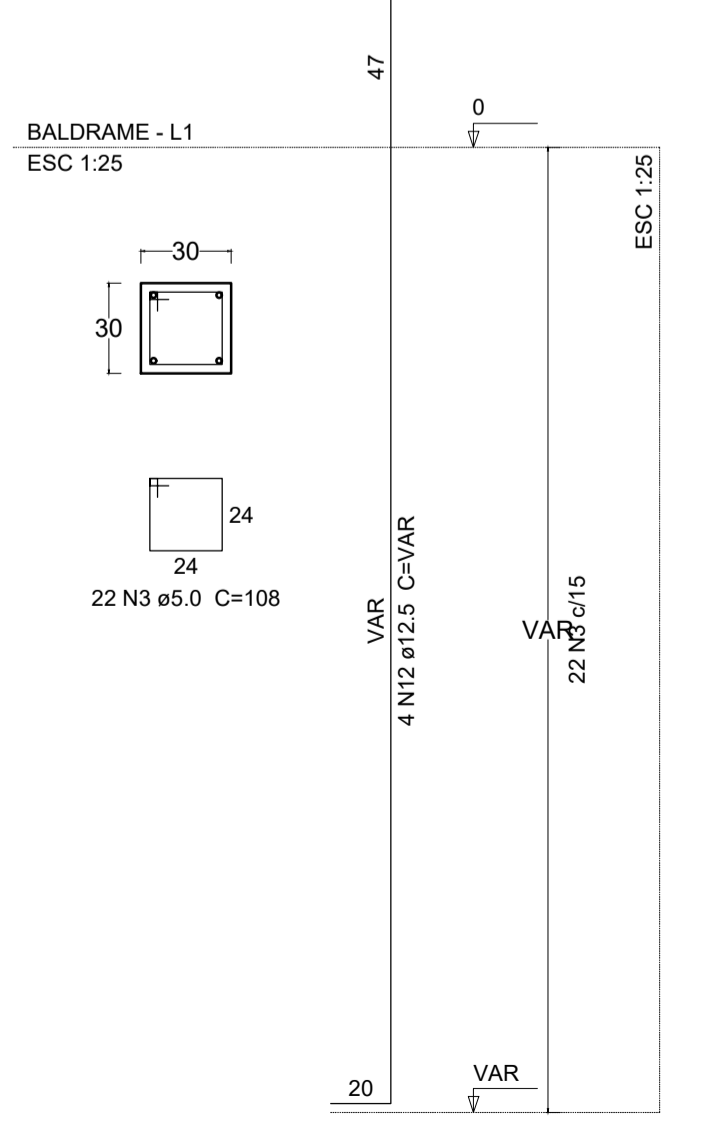
S3
PLANTA
ESC 1:25



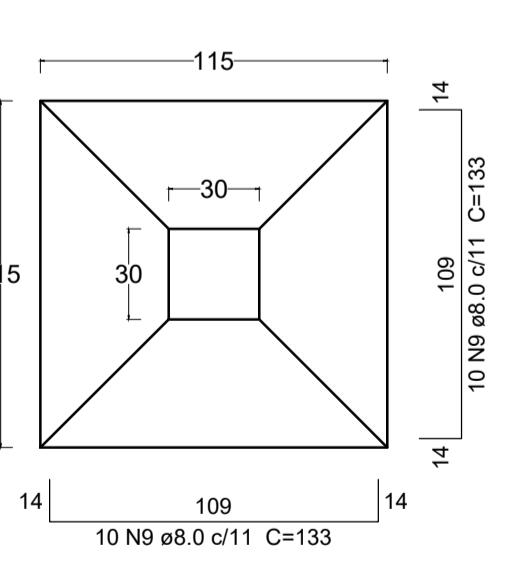
Solo com capacidade de suporte > 1.50 kgf/cm²
Solo compactado sobre a sapata
peso específico > 1600.00 kgf/m³



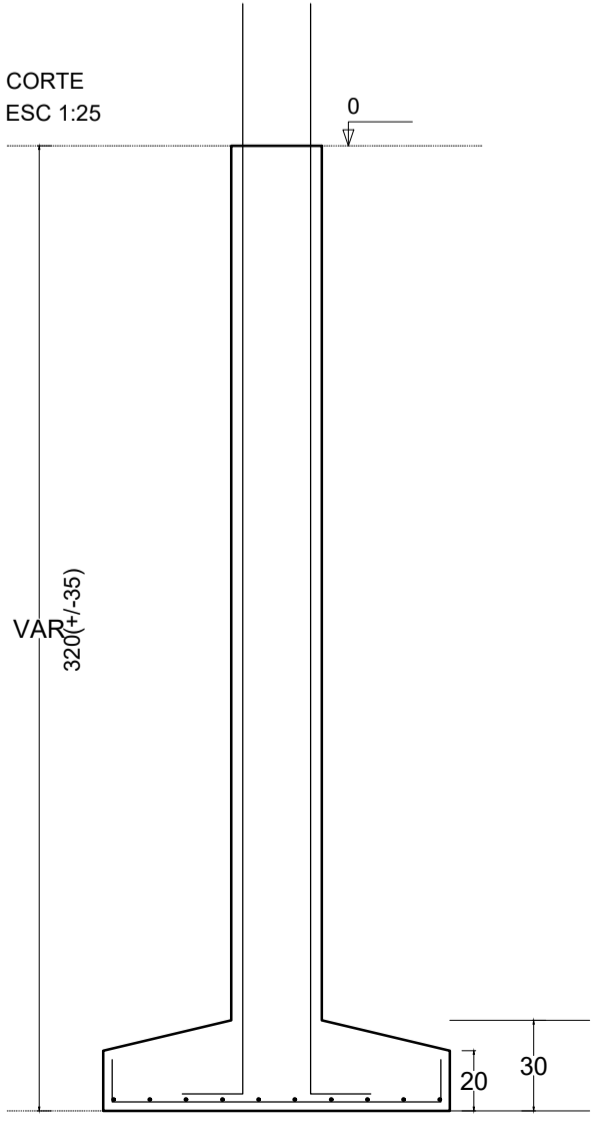
P6=P9



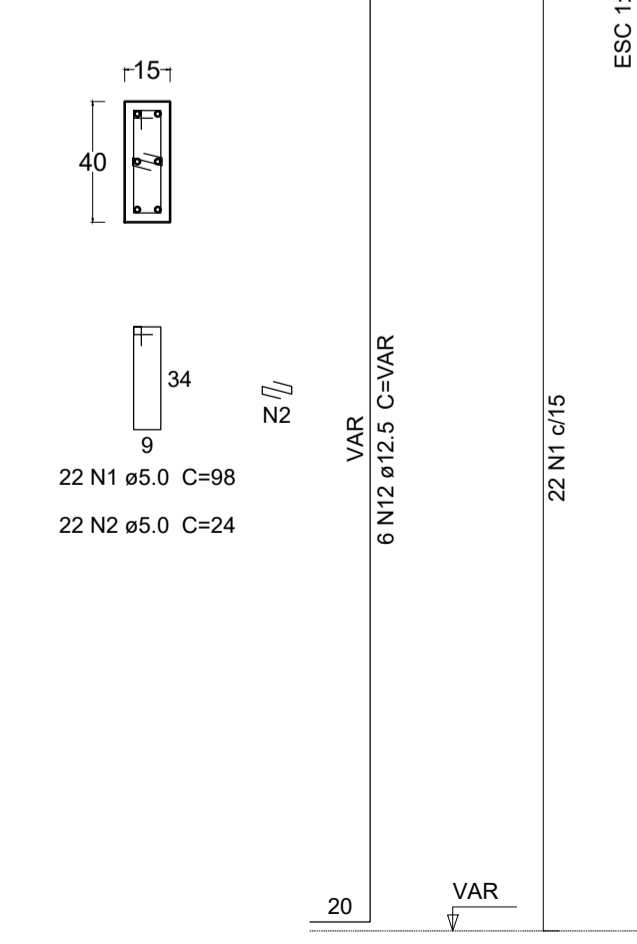
S6=S9
PLANTA
ESC 1:25



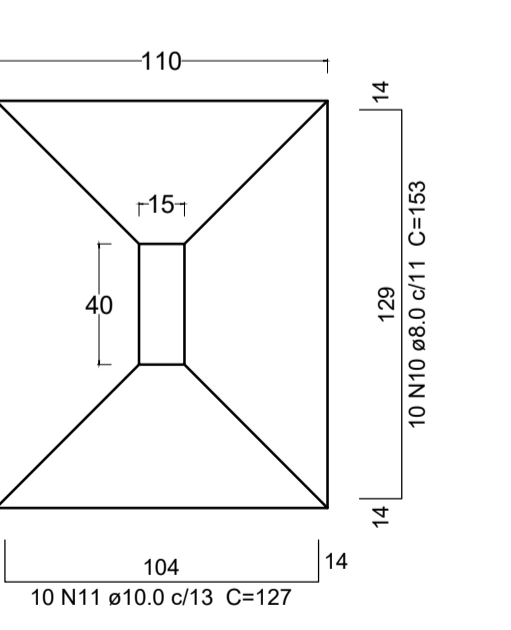
Solo com capacidade de suporte > 1.50 kgf/cm²
Solo compactado sobre a sapata
peso específico > 1600.00 kgf/m³



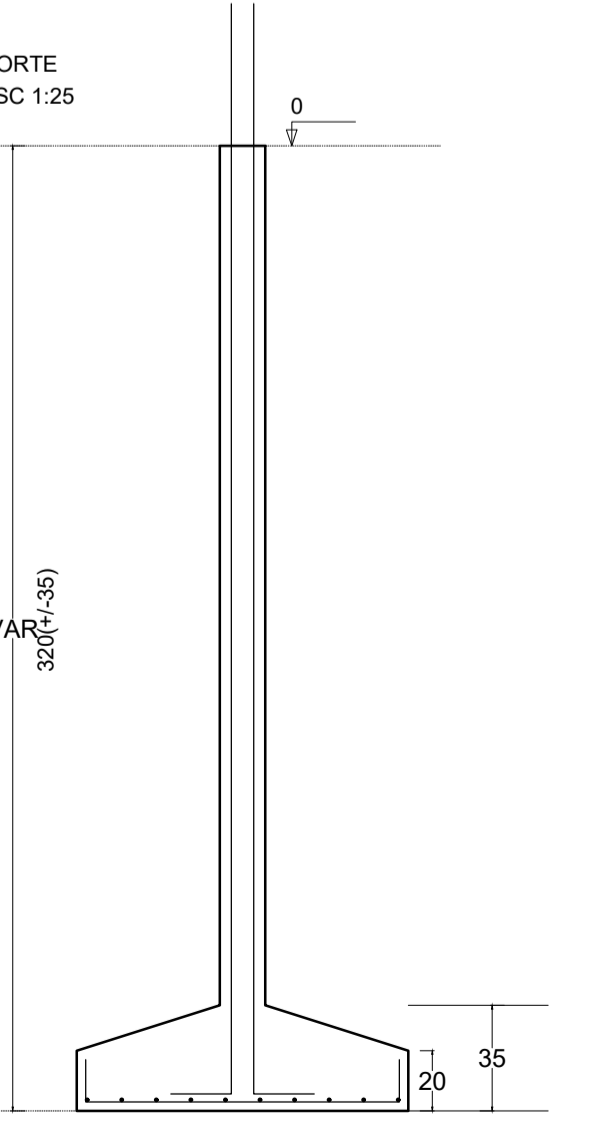
P8=P10



S8=S10
PLANTA
ESC 1:25



Solo com capacidade de suporte > 1.50 kgf/cm²
Solo compactado sobre a sapata
peso específico > 1600.00 kgf/m³



OBS.: A PROFUNDIDADE DA FUNDAÇÃO É VARIÁVEL (VAR), DEPENDE DA RESISTÊNCIA DO SOLO IN LOCO.

PROJETO PARQUE DE EXPOSIÇÕES DE IGARATINGA
PREFEITURA MUNICIPAL DE IGARATINGA

TIPO: PROJETO ESTRUTURAL
CIDADE: IGARATINGA
ESTADO: MG
DATA: JANEIRO/2020
ESCALA: INDICADA
PRANCHA: 03/07

PREFEITURA MUNICIPAL DE IGARATINGA
CNPJ: 18.313.825/0001-21

JULIANA MACIEL MARINHO VECCI
ENG. CIVIL - CREA MG 202.696/D