

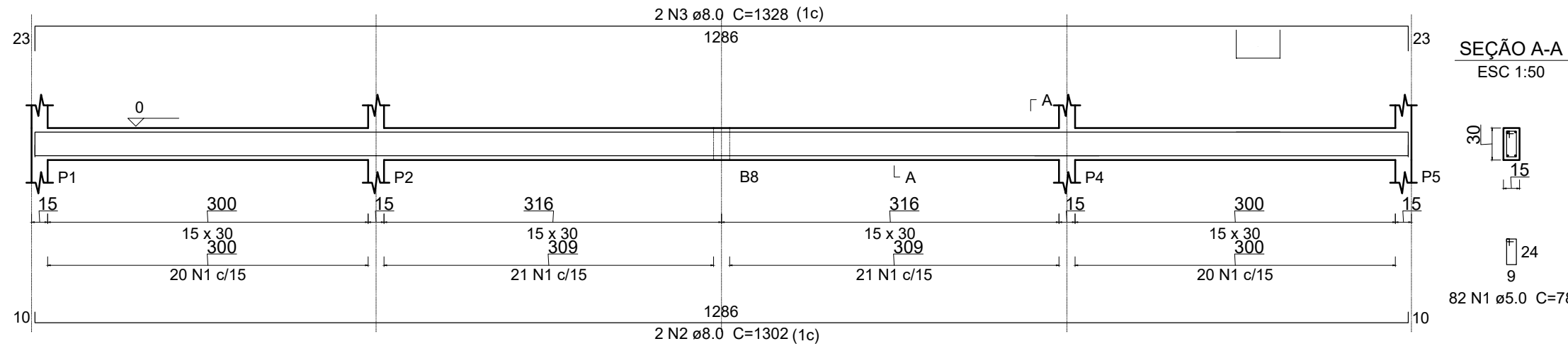
**FORMA BALDRAME**  
ESCALA - 1:50

Vigas			
Nome	Seção (cm)	Elevação (cm)	Nível (cm)
B1	15x30	0	0
B2	15x30	0	0
B3	15x30	0	0
B4	15x30	0	0
B5	15x30	0	0
B6	15x30	0	0
B7	15x30	0	0
B8	15x30	0	0
B9	15x30	0	0
B10	15x30	0	0

Características dos materiais		
fck (kgf/cm²)	Ecs (kgf/cm²)	
250	238000	

Pilares			
Nome	Seção (cm)	Elevação (cm)	Nível (cm)
P1	15 x 40	0	0
P2	15 x 40	0	0
P3	30 x 30	0	0
P4	15 x 40	0	0
P5	15 x 40	0	0
P6	30 x 30	0	0
P7	15 x 40	0	0
P8	15 x 40	0	0
P9	30 x 30	0	0
P10	15 x 40	0	0
P11	15 x 40	0	0

**B1**  
ESC 1:50



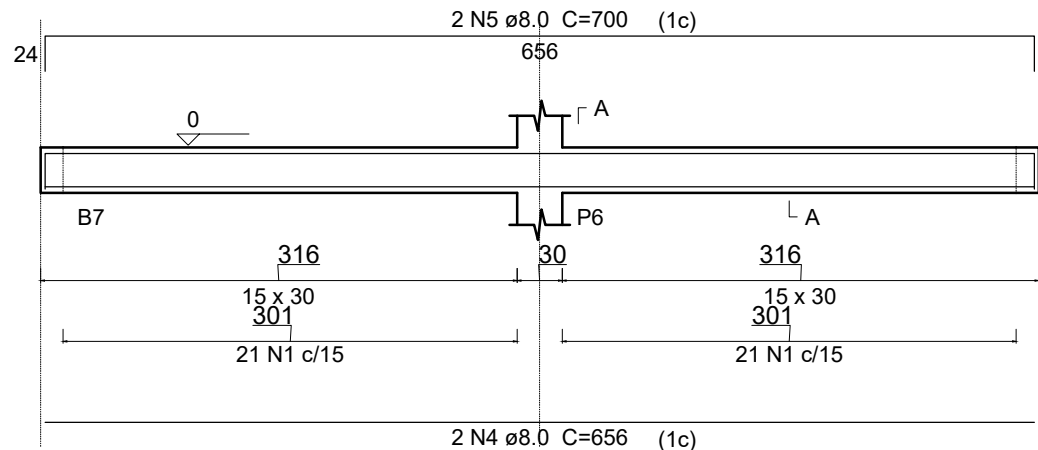
**Relação do aço**

ACO	N	DIAM	Q	UNIT (cm)	C.TOTAL (cm)
B1					
B2					
B3					
B4					
B5					
B6					
B7					
B8					
B9					
B10					

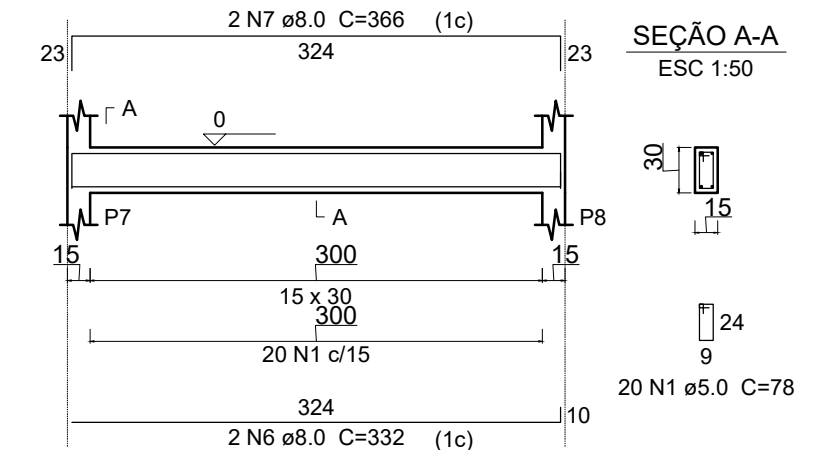
**Resumo do aço**

ACO	DIAM	C.TOTAL (m)	PESO + 10% (kg)
CA50	8.0	260.8	113.2
CA60	5.0	304.2	51.6
<b>PESO TOTAL</b>			
CA50	113.2	Vol. de concreto total (C-25) = 2.89 m³	
CA60	51.6	Área de forma total = 48.2 m²	

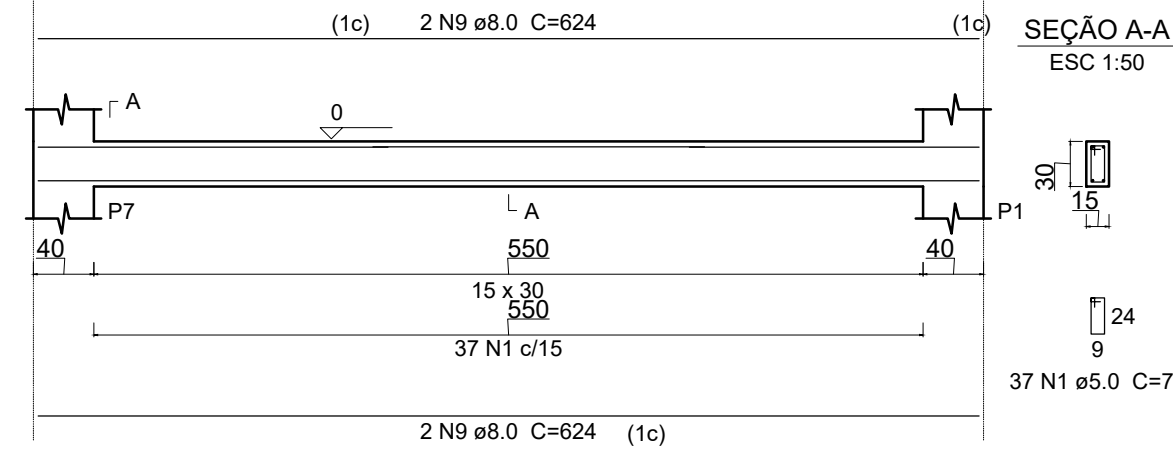
**B2**  
ESC 1:50



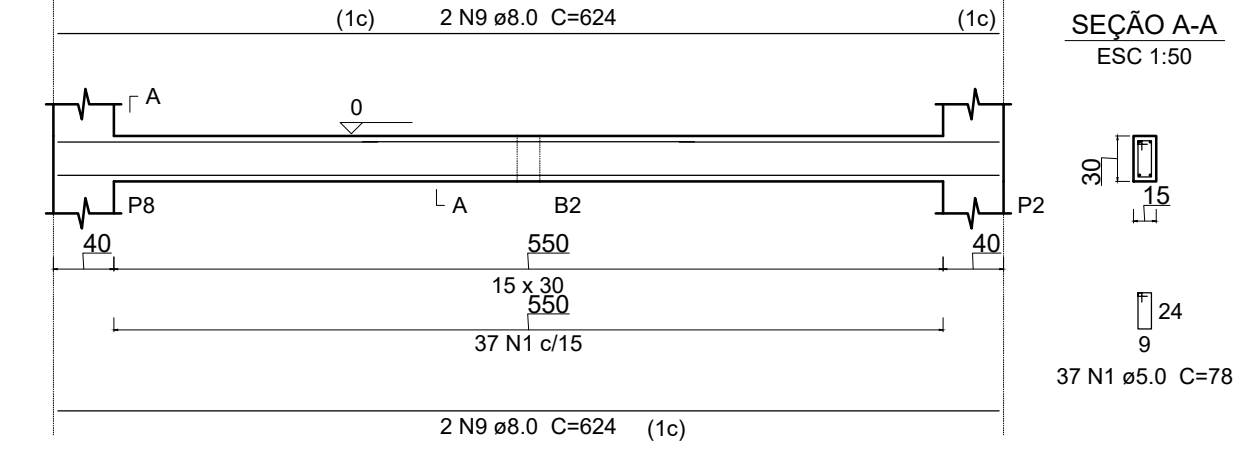
**B3**  
ESC 1:50



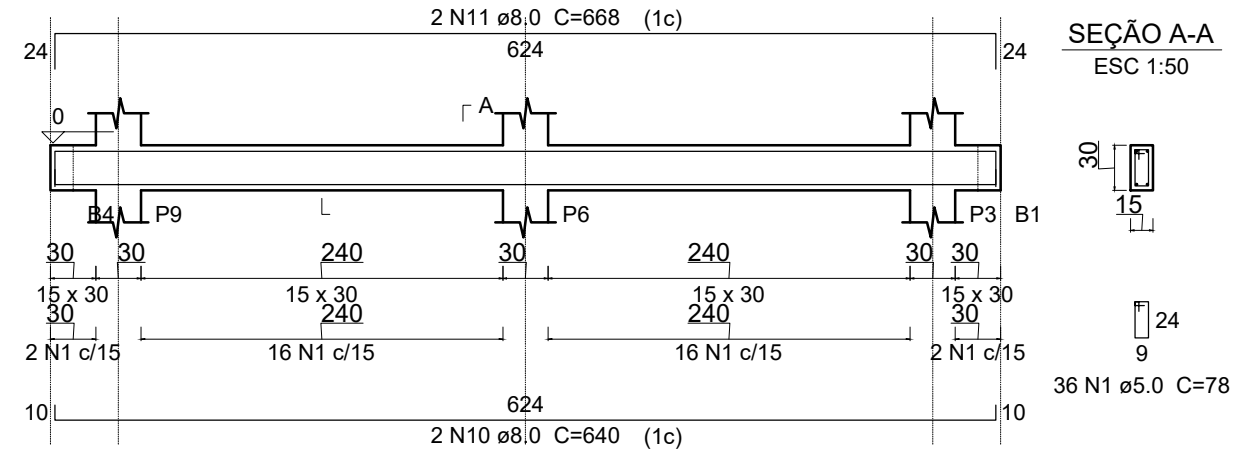
**B6**  
ESC 1:50



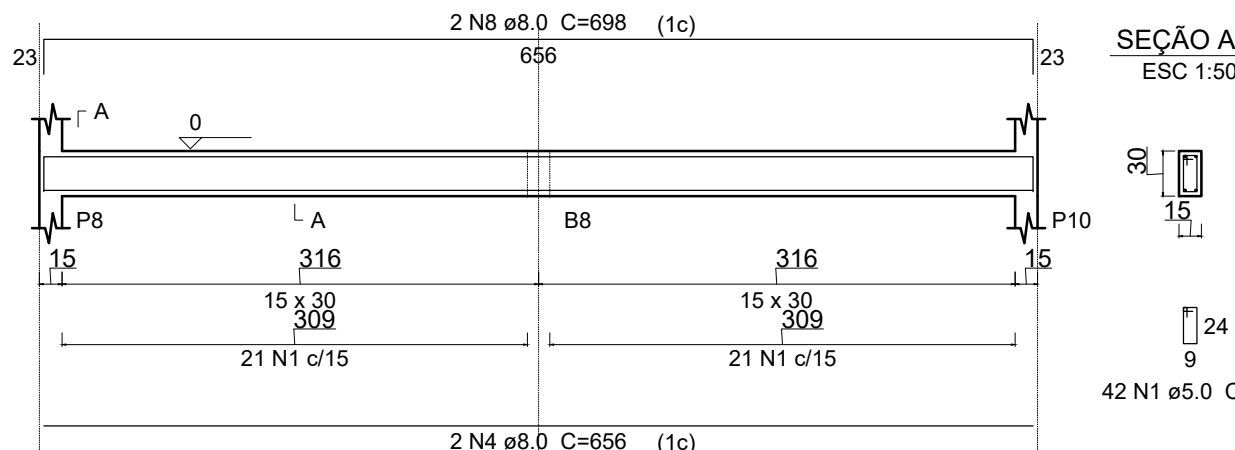
**B7**  
ESC 1:50



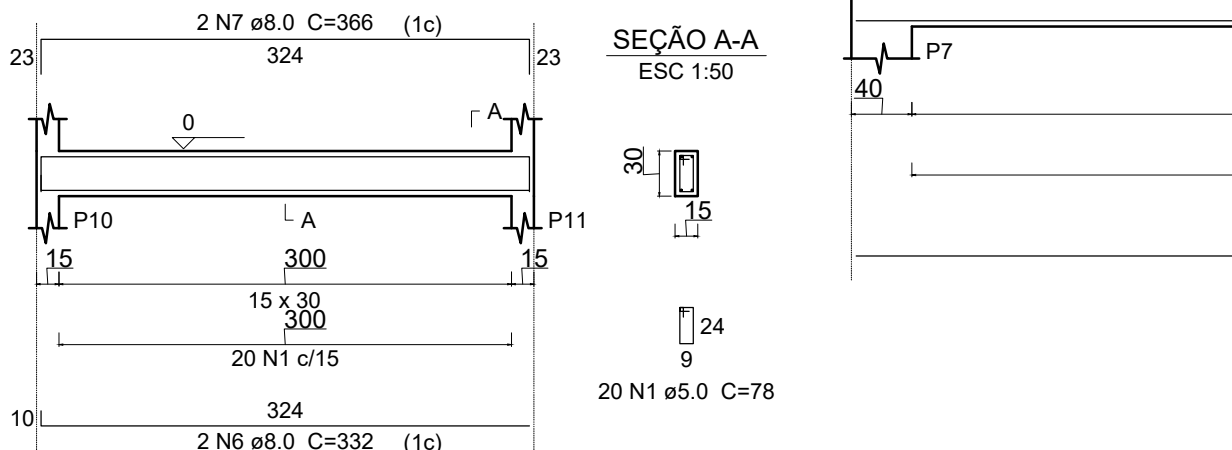
**B8**  
ESC 1:50



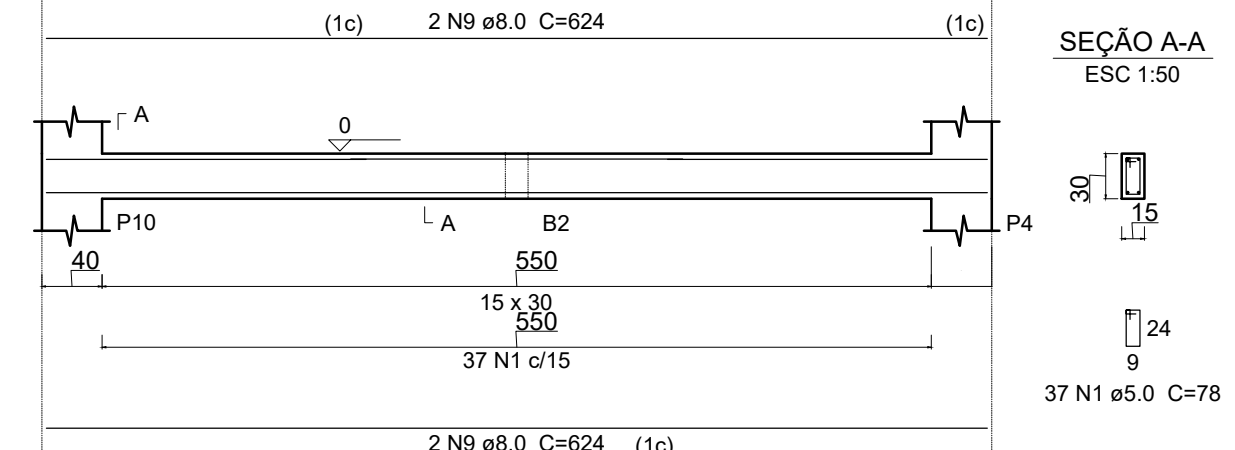
**B4**  
ESC 1:50



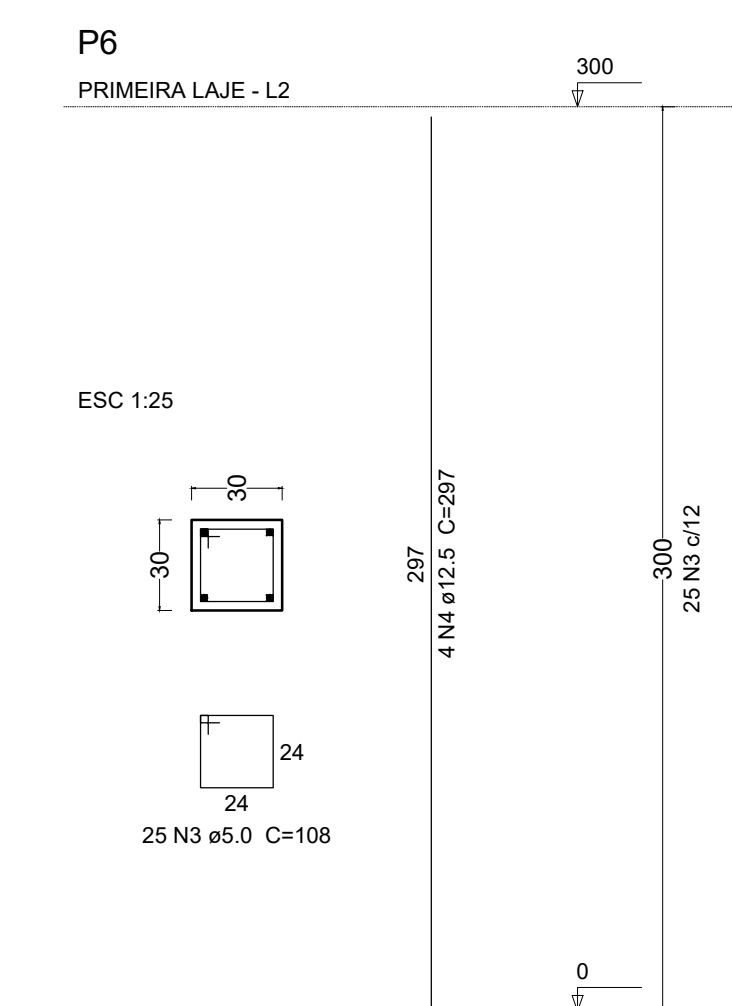
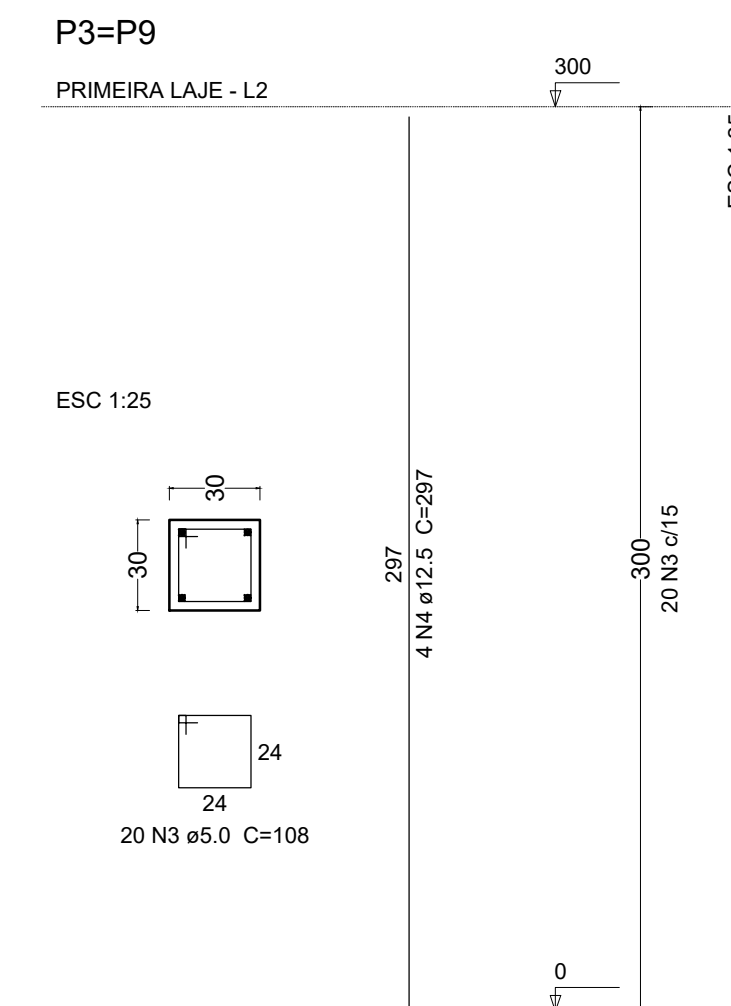
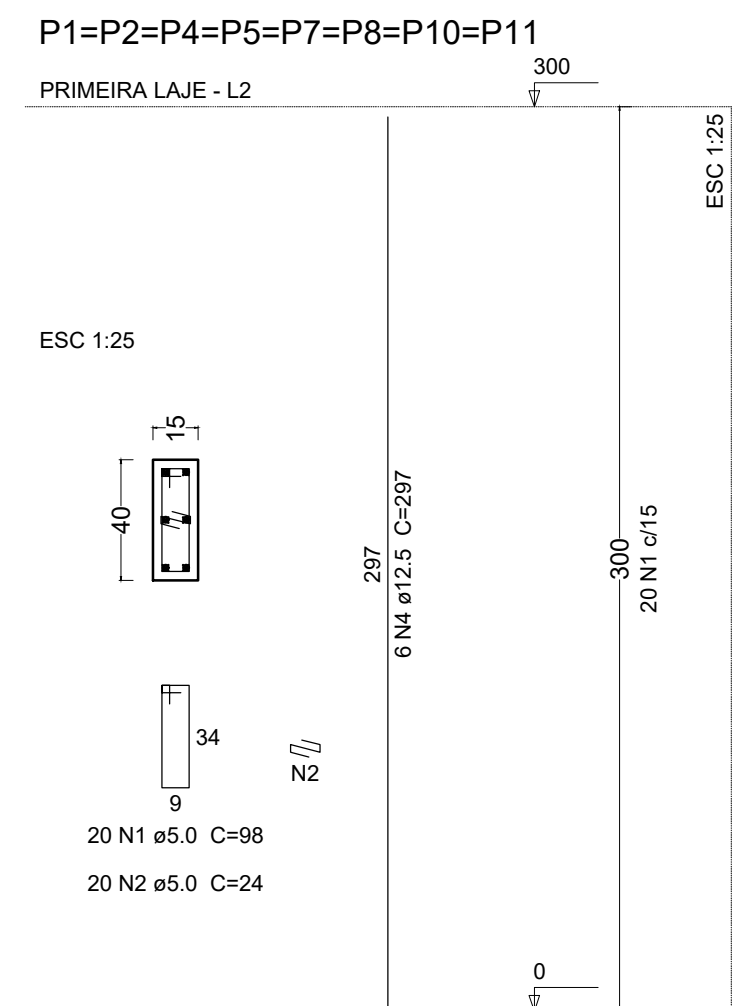
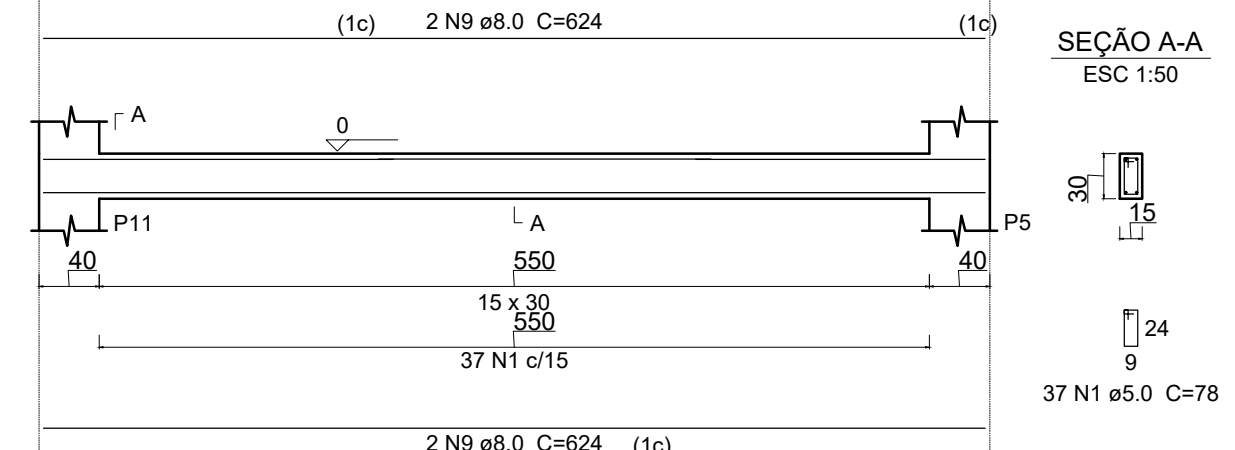
**B5**  
ESC 1:50



**B9**  
ESC 1:50

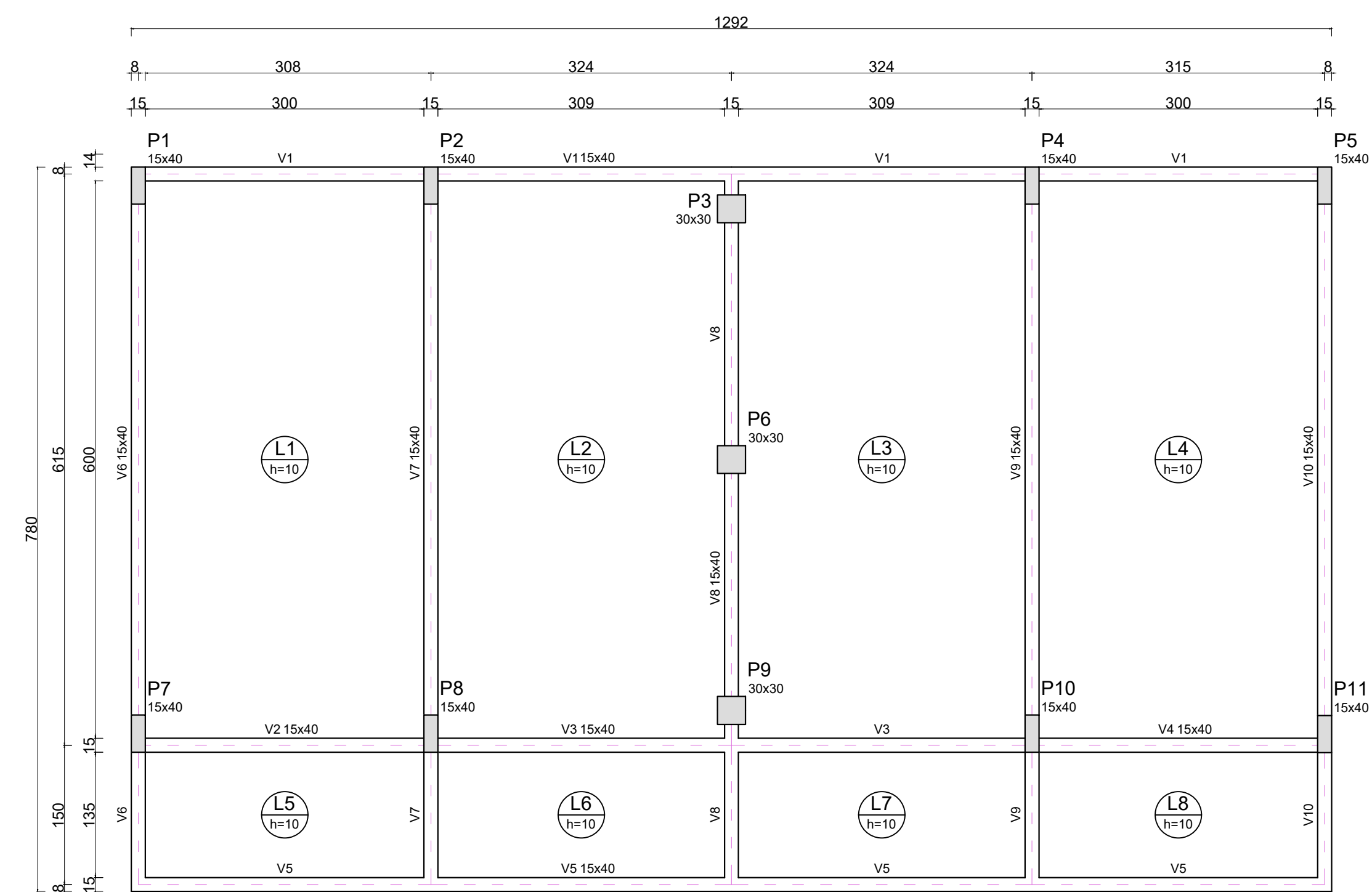


**B10**  
ESC 1:50



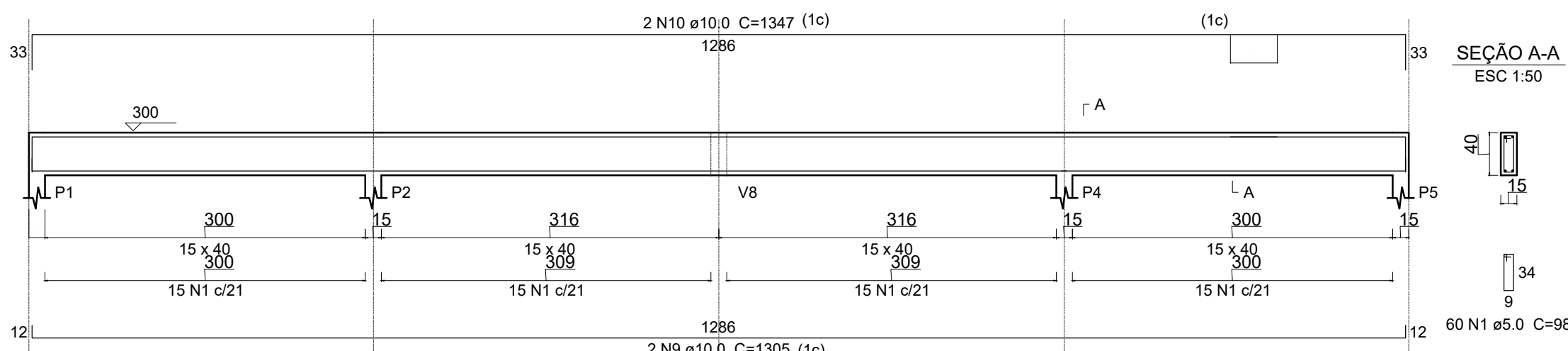
**Relação do aço**

ACO	N	DIAM	Q	UNIT (cm)	C.TOTAL (cm)
8xP1					
2xP3					
P6					
CA60	1	5.0	160	98	15680
CA50	4	12.5	65	108	7020
<b>Resumo do aço</b>					
CA50	12.5	178.2	188.8		
CA60	5.0	265.4	45		
<b>PESO TOTAL</b>					
CA50	188.8	Vol. de concreto total (C-25) = 2.25 m³			
CA60	45	Área de forma total = 37.2 m²			

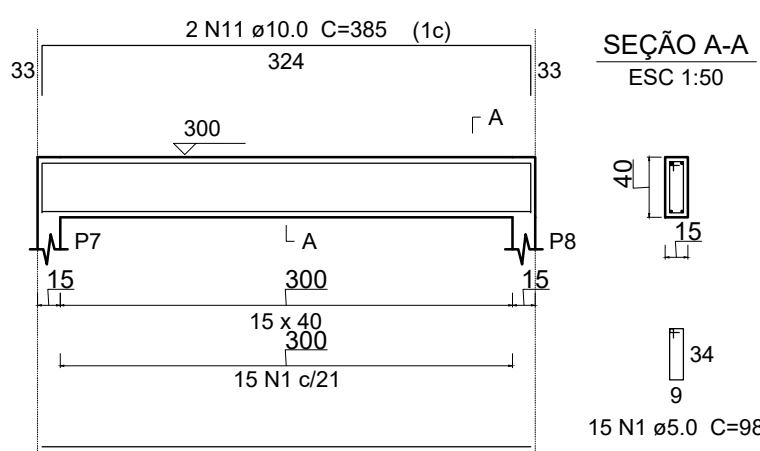


**FORMA 1ª LAJE**  
ESCALA - 1:50

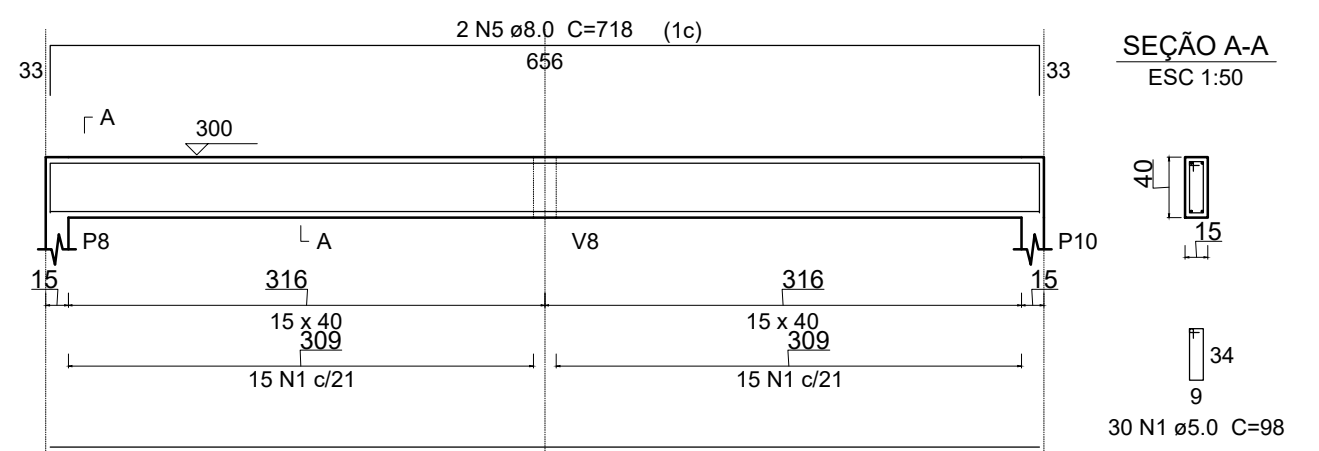
**V1**  
ESC 1:50



**V2**  
ESC 1:50



**V3**  
ESC 1:50



**PROJETO PARQUE DE EXPOSIÇÕES DE IGARATINGA**  
**PREFEITURA MUNICIPAL DE IGARATINGA**

TIPO: PROJETO ESTRUTURAL  
 CIDADE: IGARATINGA  
 DATA: JANEIRO/2020

ESTADO: MG  
 PRANCHA: 04/07

PREFEITURA MUNICIPAL DE IGARATINGA  
 CNPJ: 18.313.825/0001-21

JULIANA MACIEL MARINHO VECCI  
 ENG. CIVIL - CREA MG 202.696/D